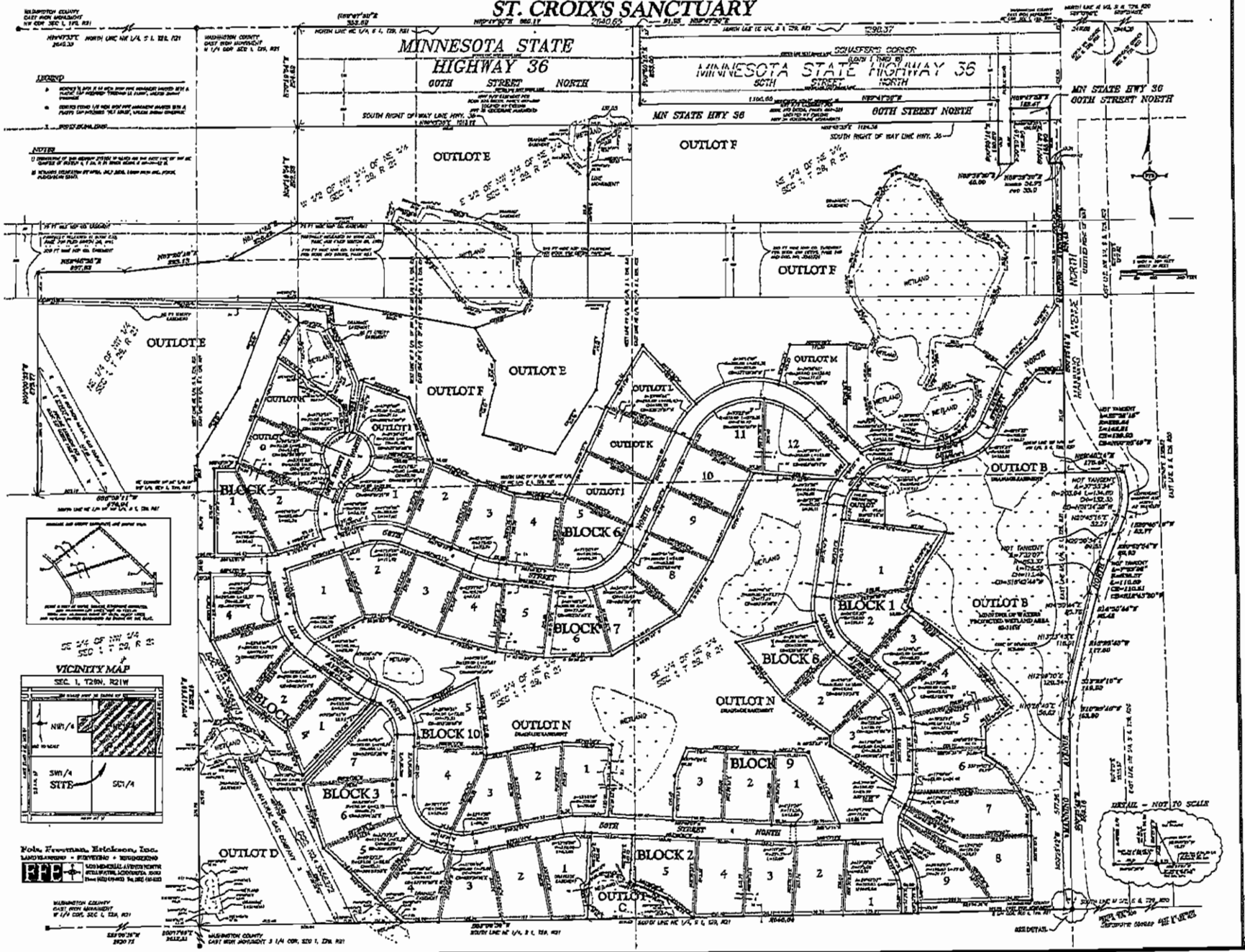


ST. CROIX'S SANCTUARY

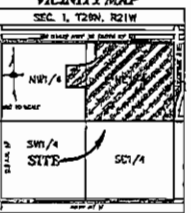
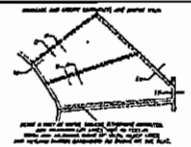


LEGEND

- 1. BOUNDARY OF THE SANCTUARY AS SHOWN BY A DOTTED LINE.
- 2. BOUNDARY OF THE SANCTUARY AS SHOWN BY A SOLID LINE.
- 3. BOUNDARY OF THE SANCTUARY AS SHOWN BY A DASHED LINE.

NOTES

- 1. BOUNDARY OF THE SANCTUARY AS SHOWN BY A DOTTED LINE.
- 2. BOUNDARY OF THE SANCTUARY AS SHOWN BY A SOLID LINE.
- 3. BOUNDARY OF THE SANCTUARY AS SHOWN BY A DASHED LINE.



Notes: Newman, Erickson, Inc. ARCHITECTS - ST. CROIX'S SANCTUARY

WASHINGTON COUNTY
EAST REG. DISTRICT
W 1/4 COR. SEC. 1, T28N, R21W

